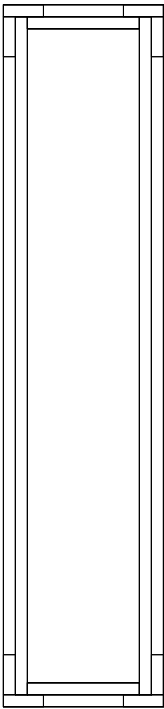


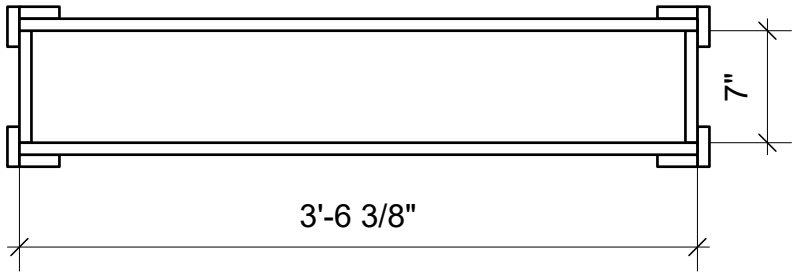
Front Frame Elevation

3/4 Ply
1@3'-7 7/8" x 0'-10"

Lauan
2@ 3'-7 7/8" x 3'-0"
2@ 3'-0" x 0'-10"



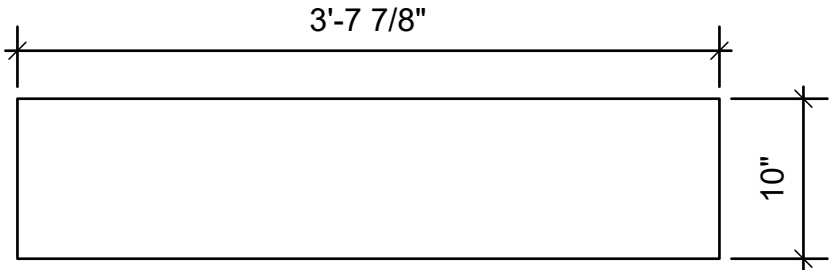
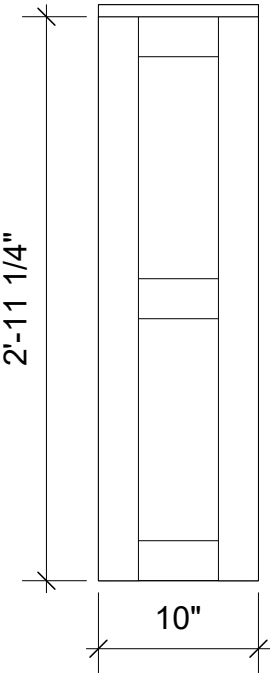
3D Model



Top Frame Elevation

1x3
8@ 2'-11 1/4"
6@ 3'-6 3/8"
6@ 0'-7"

Side Elevation



Top Elevation

HHFF Half-Wall

1"=1'-0"