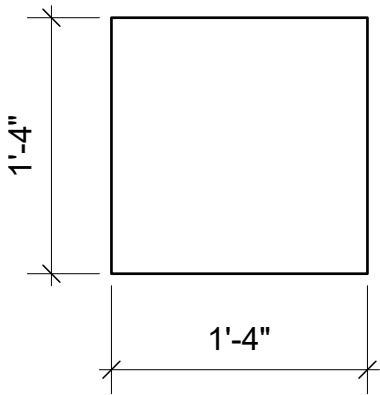
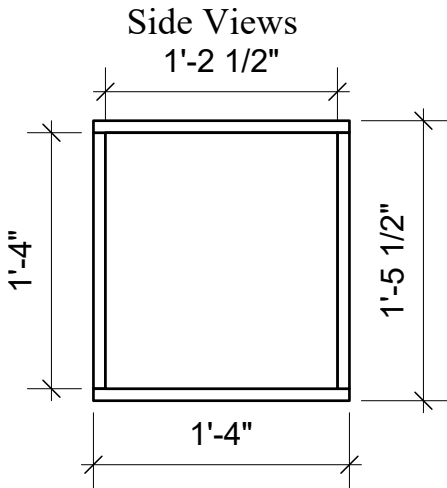


3D Model

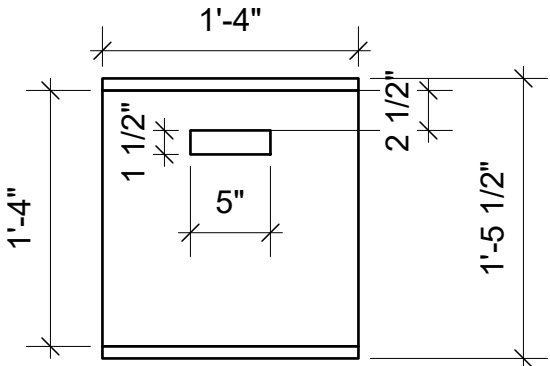
Top and Bottom View



Notes: handle holes should be rounded



Front and Back View



3/4 Ply

2@ 1'- 4" x 1'- 4"

2@ 1'- 4" x 1'- 4" (with holes for handles at 5" x 1 1/2")

2@ 1'- 4" x 1'- 2 1/2"

Build 4

Junie B Jones	
Letter Blocks	
Design by Connor Chambers Technical Direction by Eleanor Wallace	
Fall 2025	1"=1'